



Denlok Jacking Pipe

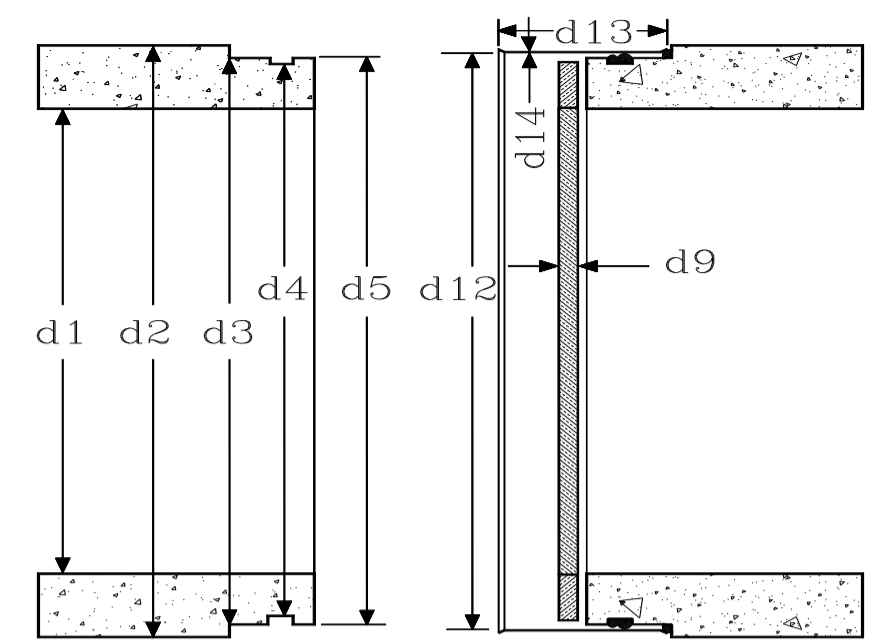
Revision Date:
12-May-14

Can Clay Corp., Cannelton, Indiana

Phone: 800/282-2529

Exceeds EN-295 Part 7 and ASTM C 1208

Dimensions subject to change without notice.



NOMINAL DIAMETER INCHES	PIPE DIMENSIONS IN INCHES						PACKING RING			SLEEVE					
	+d1	MAX d2	+d2	+d3	+d4	+d5	+d6	+d7	+d8	+d9	d10	d11	+d12	+d13	d14
	<i>4" - 12" (DN100 - DN300) Tolerances</i>						<i>* Polyurethane Joint</i>								
	0.197		0.197			0.039				0.04	+0.08/-0.0	+0.08/-0.0	0.02	0.04	
	<i>15" - 18" (DN375 - DN450) Tolerances</i>														
	0.236		0.236			0.020	0.020	0.020		0.04	+0.08/-0.0	+0.08/-0.0	0.02	0.04	
	<i>20" - 21" (DN500 - DN525) Tolerances</i>														
	0.295		0.295	0.020	0.020	0.020	0.020	0.020	0.020	0.04	+0.08/-0.0	+0.08/-0.0	0.02	0.04	
	<i>24" - 27" (DN600 - DN700) Tolerances</i>														
	0.354		0.354	0.020	0.020	0.020	0.020	0.020	0.020	0.04	+0.08/-0.0	+0.08/-0.0	0.02	0.04	
	<i>30" - 32" (DN750 - DN800) Tolerances</i>														
	0.472		0.472	0.020	0.020	0.020	0.020	0.020	0.020	0.04	+0.08/-0.0	+0.08/-0.0	0.02	0.04	
	<i>36" - 48" (DN900 - DN1200) Tolerances</i>														
	0.591		0.591	0.020	0.020	0.020	0.020	0.020	0.020	0.04	+0.08/-0.0	+0.08/-0.0	0.02	0.04	
	ID d1	MAX OD Max d2	OD d2	Seal ID d3	d4	d5	Shoulder Width			Thick. d9	ID d10	OD d11	ID d12	Width d13	Thick d14
4"*	4.016	7.638	7.441		6.402		1.732			0.51	3.937	6.480	7.028	3.661	0.059
6" *	5.984	9.882	9.685		8.661		1.732			0.51	6.102	8.701	9.161	3.661	0.059
8" *	7.874	11.890	11.693		10.669		1.732			0.51	7.992	10.709	11.280	3.661	0.059
10" *	9.843	13.819	13.622		12.598		1.732			0.51	9.961	12.638	13.209	3.661	0.059
12"	11.929	16.024	15.827	15.220	14.827	15.142	0.984	0.709	0.512	0.75	12.047	14.866	15.366	4.724	0.059
15"	15.157	19.370	19.134	18.445	18.051	18.366	0.984	0.709	0.512	0.75	15.315	18.110	18.602	4.724	0.059
16"	15.945	20.512	20.276	19.488	19.094	19.409	0.984	0.709	0.512	0.75	16.102	19.154	19.665	4.724	0.059
18"	17.953	22.716	22.480	21.811	21.417	21.732	0.984	0.709	0.512	0.75	18.110	21.476	21.961	4.724	0.059
20"	20.039	25.453	25.157	24.508	24.114	24.429	0.984	0.709	0.512	0.75	20.256	24.213	24.646	4.724	0.079
21"	20.866	25.728	25.433	24.705	24.311	24.626	0.984	0.709	0.512	0.75	21.083	24.409	24.866	4.724	0.079
24"	23.661	30.079	29.724	28.917	28.528	28.843	0.984	0.709	0.512	0.75	23.937	28.567	29.070	4.724	0.079
24"	23.937	30.315	29.961	29.154	28.760	29.075	0.984	0.709	0.512	0.75	24.213	28.799	29.303	4.724	0.079
27"	27.362	34.213	33.858	32.835	32.441	32.756	1.181	0.709	0.512	0.75	27.638	32.480	32.949	5.118	0.118
30"	29.213	35.866	35.394	34.409	34.016	34.331	1.181	0.709	0.512	0.75	29.606	33.937	34.559	5.118	0.118
30"	30.984	37.874	37.402	36.437	36.043	36.358	1.181	0.709	0.512	0.75	31.378	35.965	36.614	5.118	0.118
32"	31.181	37.874	37.402	36.437	36.043	36.358	1.181	0.709	0.512	0.75	31.575	35.965	36.555	5.118	0.118
32"	31.181	38.898	38.425	37.028	36.634	36.949	1.181	0.709	0.512	0.75	31.575	36.555	37.146	5.118	0.118
36"	35.157	43.268	42.677	41.339	40.819	41.291	1.654	0.709	0.512	0.75	35.669	40.780	41.654	6.063	0.118
36"	35.984	44.291	43.701	42.362	41.841	42.313	1.654	0.709	0.512	0.75	36.496	41.801	42.677	6.063	0.118
39"	39.724	48.268	47.677	46.260	45.740	46.213	1.654	0.709	0.512	0.75	40.236	45.701	46.531	6.063	0.118
42"	42.717	51.929	51.339	50.039	49.518	49.990	1.654	0.709	0.512	0.75	43.228	49.478	50.295	6.063	0.118
48"	48.031	57.559	56.969	55.472	54.951	55.423	1.654	0.709	0.512	0.75	48.543	54.911	55.785	6.063	0.118
48"	48.622	58.268	57.677	56.181	55.659	56.132	1.654	0.709	0.512	0.75	49.134	55.620	56.494	6.063	0.118

Jacking Strengths
Pursuant to EN 295 Part 7 = 10,875 PSI
DENLOK Exceeds EN 295 -7 & ASTM C 1208

Approx. Weight per Foot Pounds	Minimum Jacking Strength S. F. = 1 TONS	Working Jacking Load S.F. = 3.0 TONS	Working Jacking Load S.F. = 4.0 TONS
32	97	32	24
48	154	51	39
61	204	68	51
74	243	81	61
91	306	102	76
115	377	126	94
128	436	145	109
147	543	181	136
183	714	238	178
190	608	203	152
251	1008	336	252
251	1008	336	252
289	1209	403	302
305	1173	391	293
345	1316	439	329
341	1263	421	316
409	1447	482	362
457	1652	551	413
482	1757	586	439
538	1987	662	497
650	2454	818	614
727	2791	930	698
749	2879	960	720